

ShowCase

Showcase your digital footprint



Occupancy

Customer Expectations

Limited Resources

Unlock the potential for full occupancy at your facility with ShowCase.

Lead in digital innovation, offering cutting-edge solutions to your residents.

Implementing ShowCase at your facility is a seamless transition, ensuring no staff disruption.

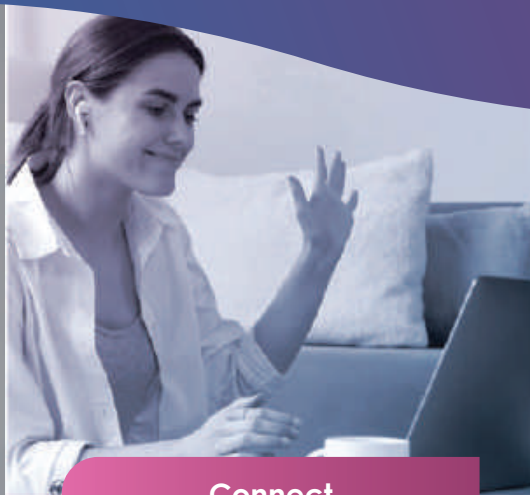
FamilyShare

Share . Connect . Immerse



Share

Access to family video-messages, personal photographs, music and movies for residents living with or without dementia



Connect

Video-conferencing platform that allows family members to remotely connect with their loved-ones or upload video messages at their convenience



Immerse

Engaging Virtual Reality experiences that allow loved-ones and their families to experience new places and activities

Trials at Monash University reported that FamilyShare has been shown to provide a high degree of autonomous use, reduce depression and anxiety, reduce social isolation and loneliness, reduce agitation and aggression, adapt to the different impairment levels of dementia and provide high levels of engagement to individuals, their family members and caregivers.

(Davison et al. 2016).

